



## **SJ46 AJ | SJ51 AJ** **ARTICULATING BOOM LIFTS**

Skyjack's Articulating Boom Lifts are available in two models featuring the SJ46 AJ and SJ51 AJ. Both models boast an industry leading, standard equipped, 360 degree continuous turret rotation. Zero tail swing complements the turret design allowing for flexible operation in tight locations. Superior positive traction and terrainability is provided by the axle based 4WD used in many of Skyjack's product designs, which accounts for a proven low maintenance, rugged and reliable drive train.



**SKYJACK**



# ARTICULATING BOOM LIFTS

## SPECIFICATIONS

### SJ46AJ

### SJ51AJ

AS/NZS 1418.10:2011

Work Height	16.15 m	17.58 m
Platform Height	14.15 m	15.58 m
Horizontal Reach	7.68 m	9.16 m
Up and Over Height	7.63 m	7.63 m
Platform Size	1.83 x 0.76 m	1.83 x 0.76 m
Stowed Width	2.24 m	2.24 m
Tailswing	Zero	Zero
Stowed Height	2.07 m	2.07 m
Stowed Length	6.50 m	7.25 m
Wheelbase	2.03 m	2.03 m
Ground Clearance	0.40 m	0.40 m
Rotation	360°	360°
Platform Rotation	180°	180°
Jib Length	1.42 m	1.42 m
Jib Range +/-	+70° / -75°	+70° / -75°
Weight	6981 kg	7316 kg
Gradeability	45%	45%
Turning Radius (Inside)	2.48 m	2.48 m
Turning Radius (Outside)	5.15 m	5.15 m
Axle Oscillation	0.20 m	0.20 m
Drive Speed (High speed)	7.7 km/h	7.7 km/h
Capacity	227 kg	227 kg
Local Floor Load (With Rated Load)	827 kPa	917 kPa
Overall Floor Load (With Rated Load)	10.9 kPa	11.4 kPa
Maximum # of Persons	2	2
Tyre Type	Grip lug foam-filled	Grip lug foam-filled
Diesel Engine	48 HP	48 HP
Fuel Tank Capacity	64 L	64 L
Hydraulic Reservoir	91 L	91 L

## STANDARD FEATURES

- Axle based 4WD system
- Operator controlled locking rear differential and limited slip front differential
- Oscillating axle
- Drivable at full height
- 360° continuous turret rotation
- 45% Gradeability
- 48 HP Deutz diesel engine
- Swing out engine tray
- Swing up cowlings
- Modular platform railing system
- Wiring for outlet on platform
- Direction sensing drive and steer controls
- Proportional controls
- Relay based control system
- Colour coded and numbered wiring
- Hourmeter
- Overload sensing system
- Operator horn
- Spring hinged gate
- Lanyard attachment points
- Tie down/lifting lugs
- Wet disc SAHR brakes (rear axle)
- Grip lug foam-filled tyres

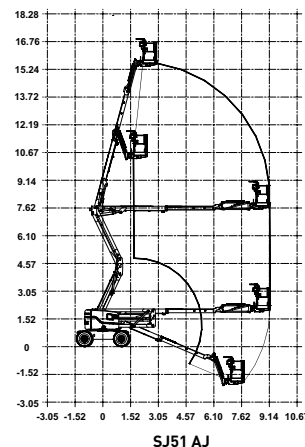
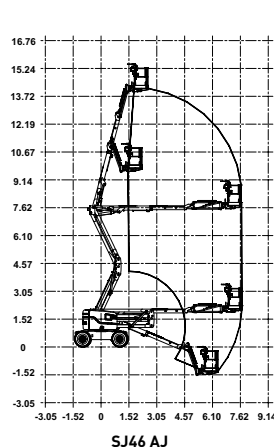
## OPTIONS†

- 0.76 x 1.52 m Platform
- Airline to platform
- 3.5 kW generator (Includes hydraulic oil cooler)
- Cold weather start kit
- Diesel scrubber
- Hydraulic oil cooler
- Flashing light
- Platform work lights
- All motion alarm

## Tyre Options ‡

- Grip lug foam-filled non marking tyres

‡ Standard lead times may be increased when optional equipment is added, consult factory  
 \*\* Capacities, and machine weights may differ when options are added



‡ Standard lead times may be increased when optional equipment is added, consult factory  
 \*\* Capacities, and machine weights may differ when options are added

**Skyjack Australia Pty Ltd**  
 4 Coates Place  
 Wetherill Park  
 New South Wales, 2164  
 Tel: +61 (0) 2878 63200  
 Fax: +61 (0) 2878 63222  
 Email: jcranmer@skyjack.com

www.skyjack.com



**SKYJACK™**

This brochure is for illustrative purpose only and based on the latest information at the time of printing. Skyjack Inc. reserves the right to make changes at any time, without notice, to specifications, standard and optional equipment. Consult the Operating Maintenance and Parts Manuals for proper procedures. AS marked platforms are in conformance to Standard AS/NZS 1418.10:2011.

AU/NZ/01/2013