

# RUNNER

DIECI ICARUS TELEHANDLER 4 T / 12.2 M



40.13

**DIECI**  
TELEHANDLERS

## PERFORMANCE

Machine model	RUNNER 40.13
Maximum capacity	4000 kg (8818 lb)
Maximum lifting height on wheels	12.20 m (40 ft)
Maximum horizontal extension on wheels	8.75 m (28.7 ft)
Fork swiveling angle	134°
Pull-out force	7300 daN (16411 lbf)
Towing force	7300 daN (16411 lbf)
Maximum climb angle	40%
Unladen weight	10420 kg (22972 lb)
Max speed (referred to wheels with maximum permitted diameter)	40 km/h (24.9 mph)

## BOOM

Machine model	RUNNER 40.13
Lifting	10.0 s
Getting off the basket	5.9 s
Extension	18.6 s
Retraction	13.6 s
Forward swiveling	3.3 s
Reverse swiveling	2.1 s

## ENGINE

Machine model	RUNNER 40.13
Brand	FPT
Nominal power	93 kW (125 HP)
@rpm	2200 rpm
Operation	4-stroke
Injection	Mechanical direct
Number and arrangement of cylinders	4, Vertical in line
Displacement	4485 cm <sup>3</sup> (274 in <sup>3</sup> )
Consumption	230 g/kWh (378.35 lb/Hp h)
@rpm	2200 rpm
Emission standards	Stage IIIA/Tier 3
Cooling system	Liquid
Intake	Turbo compressor after-cooler

## DIFFERENTIAL AXLES

Machine model	RUNNER 40.13
Axles types	2 steering, with 4 planetary reduction gears
Type of steering	4 wheels / transversal / 2 wheels
Front axle	Rigid (Leveling upon request)
Rear axle	Swinging
Service brake	Oil bath with servo brake on front and rear axle with double hydraulic system
Park brake	Automatic spring applied hydraulic release

## HYDRAULIC SYSTEM

Machine model	RUNNER 40.13
Hydraulic pump type	Gear pump for power steering and movements
Hydraulic pump capacity	130 L/min (34.3 gal/min)
Max. operating pressure	25.0 MPa (3626 psi)
Distributor control	4in1 proportional Joystick

## REFUELING

Machine model	RUNNER 40.13
Hydraulic motor (total)	168.0 L (44.38 gal)
Diesel tank	105.0 L (27.74 gal)

## TRANSMISSION

Machine model	RUNNER 40.13
Transmission type	Hydrostatic with variable flow pump
Hydraulic motor	Hydrostatic with continuous automatic adjustment
Reversal	Electro-Hydraulic
Inching	With hydraulic pedal for controlled forward movement
Transmission gearbox	Servocontrolled 2-speed

## TYRES

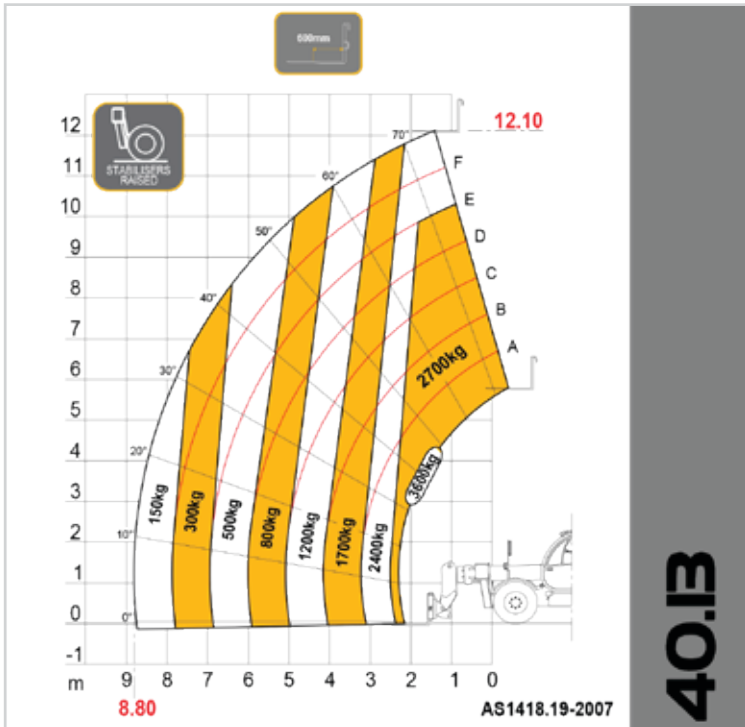
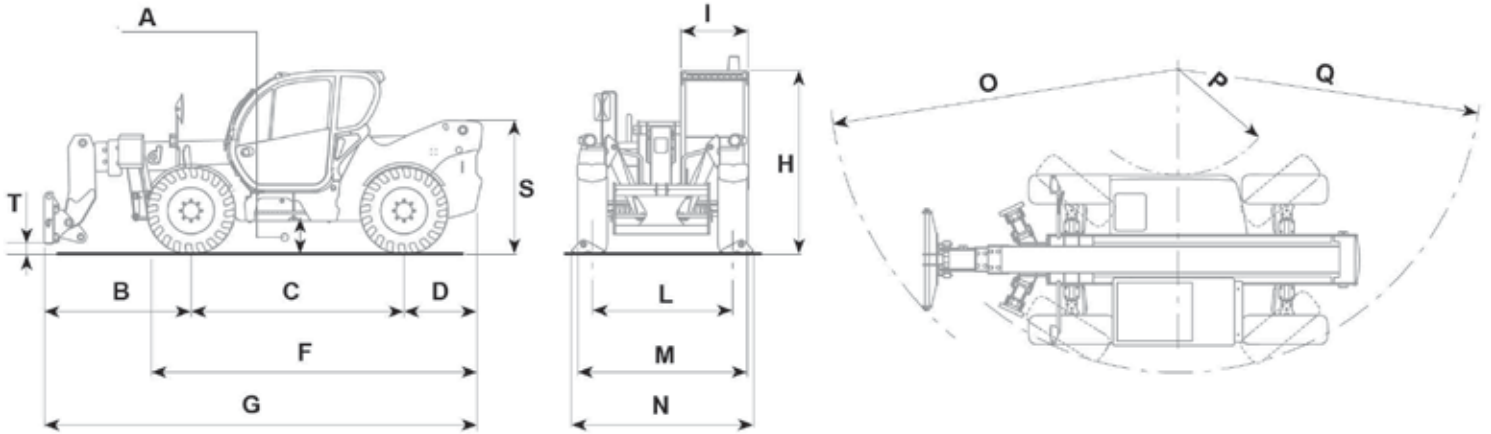
Machine model	RUNNER 40.13
Standard tyres	18x22.5"

## DIMENSIONS

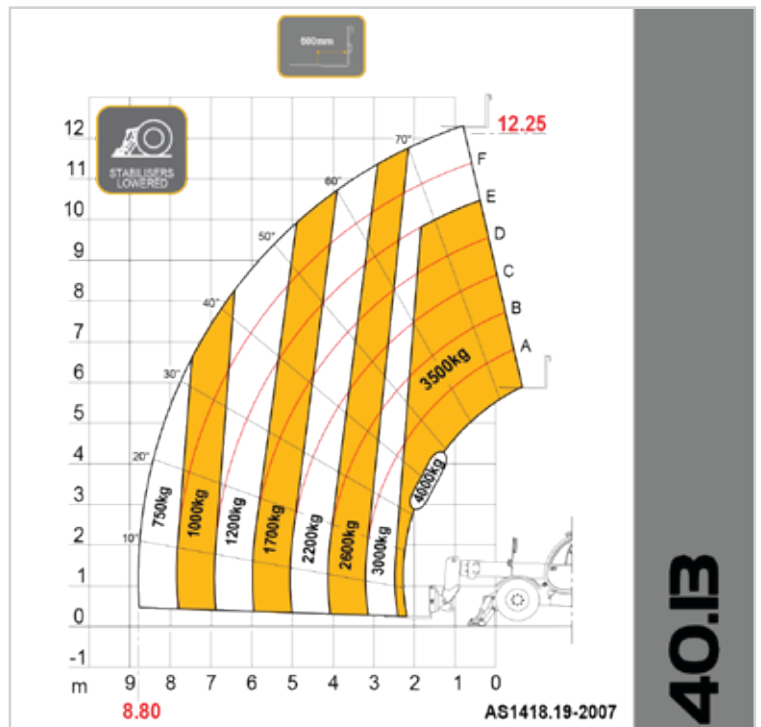
Machine model

RUNNER 40.13

A	440 mm (17.3 in)
B	2110 mm (83.1 in)
C	2600 mm (102.4 in)
D	880 mm (34.6 in)
F	4080 mm (160.6 in)
G	5590 mm (220.1 in)
H	2460 mm (96.9 in)
I	940 mm (37 in)
L	1910 mm (75.2 in)
M	2320 mm (91.3 in)
N	2480 mm (97.6 in)
O	4550 mm (179.1 in)
P	1260 mm (49.6 in)
Q	3920 mm (154.3 in)
T	110 mm (4.3 in)



40.B



40.B



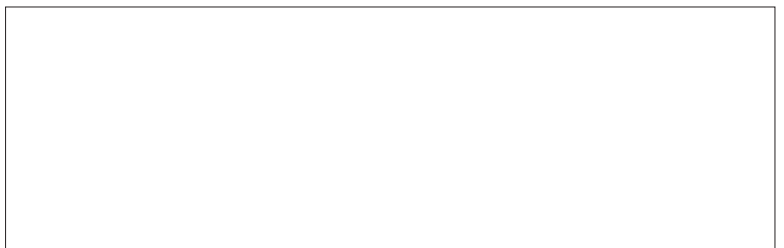
The  
**Capital Equipment**  
Specialists

Distributed by the AWD Group and their network of authorised dealers.

AWD Group - 25 Garner Place, Ingleburn NSW 2565

Tel. +61 2 8795 4555 - [www.dieci.com.au](http://www.dieci.com.au)

[info@awdgrp.com.au](mailto:info@awdgrp.com.au)



Illustrations and photos show the standard international models and may or may not include optional equipment, accessories, customer installed or modified parts, optional parts and all standard equipment with some differences in colour and features. Machine specifications are subject to change without notice and additional load charts and machine or attachment specifications may be available on request. Please refer to the operators manual for correct machine and attachment operation.

Printed in Australia SKT Runner EXTRA-EC-AU | 1.5 2019